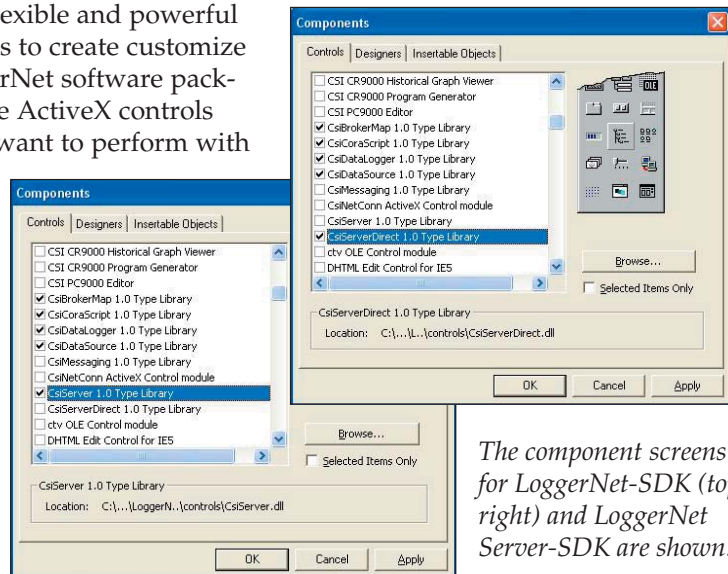


# Software Development Kits

## LoggerNet-SDK, LoggerNet Server-SDK

LoggerNet-SDK and LoggerNet Server-SDK are flexible and powerful programming tools that allow software developers to create customize applications based on Campbell Scientific's LoggerNet software package. These software development kits include five ActiveX controls (DLLs) that encapsulate fundamental tasks users want to perform with our dataloggers.

LoggerNet-SDK and LoggerNet Server-SDK differ in their communications DLL. LoggerNet-SDK includes a limited LoggerNet Server communications DLL that only allows direct RS-232 and IP port connections with a single datalogger. LoggerNet Server-SDK includes the entire LoggerNet Server communications DLL that supports datalogger networks and any of our telecommunications links.



The component screens for LoggerNet-SDK (top right) and LoggerNet Server-SDK are shown.

### ActiveX Controls/Functions Supported

#### *CsiBrokerMap*

- Browse the datalogger network to display station and data table information

#### *CsiDataLogger*

- Establish connection to a datalogger via the LoggerNet server
- Check/set the datalogger clock
- Transfer datalogger programs to and from the datalogger
- Toggle ports and flags
- Collect data from a datalogger
- Set input location variables

#### *CsiDataSource*

- Retrieve data from the LoggerNet server cache

#### *CsiCoraScript*

- Pass CoraScript commands to the LoggerNet server

#### *CsiServerDirect (LoggerNet-SDK only)*

- Start and stop the included, limited LoggerNet Server communications DLL

#### *CsiServer (LoggerNet Server-SDK only)*

- Start and stop the included, LoggerNet Server DLL



**CAMPBELL SCIENTIFIC, INC.**

815 W. 1800 N. • Logan, Utah 84321-1784 • (435) 753-2342 • FAX (435) 750-9540 • www.campbellsci.com

---

## **Requirements**

The developer should be familiar with Campbell Scientific hardware and software functionality. Although a separate installation of LoggerNet software is not required, these software development kits do not include any of the LoggerNet clients. The developer must create all of the clients that will start, stop, and administer the included LoggerNet Server DLL.

## **Documentation**

Both LoggerNet-SDK and LoggerNet Server-SDK include the following:

- Beginner's Guide
- Programmer's Reference Manual
- Quick Reference Help File
- Delphi 6.0, Visual C++ 7.1 MFC, and Visual Basic 6.0 examples for each ActiveX control with both source code and compiled executables



**CAMPBELL SCIENTIFIC, INC.**

815 W. 1800 N. • Logan, Utah 84321-1784 • (435) 753-2342 • FAX (435) 750-9540  
Offices also located in: Australia • Brazil • Canada • England • France • South Africa • Spain

Copyright © 2003, 2005  
Campbell Scientific, Inc.  
Printed July 2005